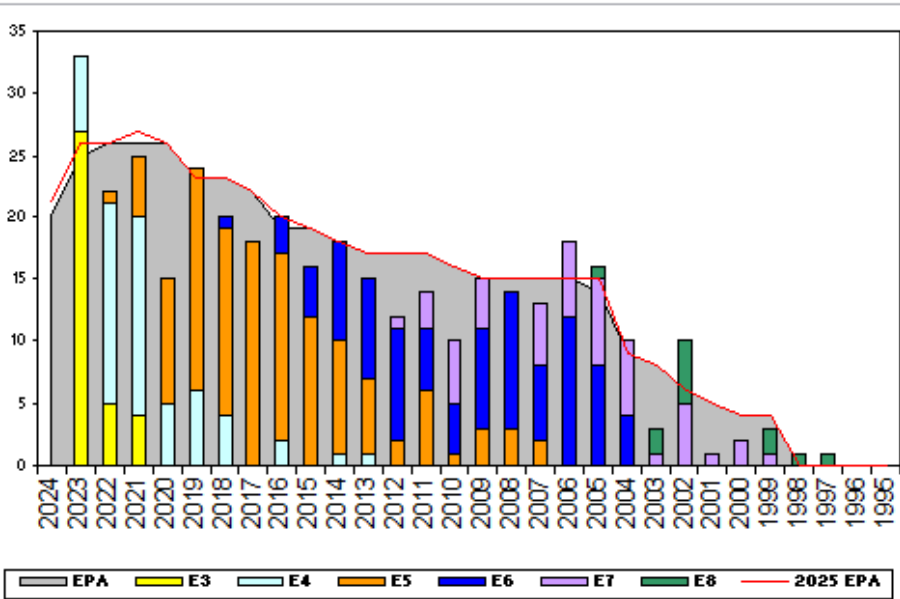


# Aviation Machinist's Mate, TAR - J020

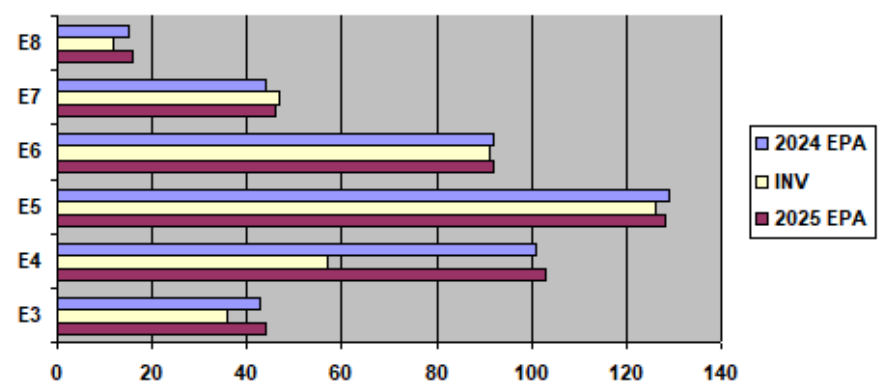


	Sea Shore Rotation			FS MANNING		ADV OPP.	
	TOUR	SEA	SHORE	PG	SEA	SHORE	ADTAR
E1-3	48	42	E1-3	109.09%	15.38%	TIR	TIR
E4	48	42	E4	58.33%	52.00%	65.52%	58.8%
E5	48	42	E5	103.70%	83.33%	23.64%	47.0%
E6	48	42	E6	95.08%	111.11%	7.22%	15.0%
E7	48	36	E7	115.38%	93.75%	24.39%	24.3%
E8	48	36	E8	88.89%	80.00%	4.17%	5.3%
E9	42	36	E9	0.00%	0.00%	0.00%	20.0%

### Zone Information

	ZONE A	ZONE B	ZONE C	ZONE D	ZONE E	ALL ZONES
<b>FY24 Manning:</b>	86%	92%	80%	100%	61%	<b>87%</b>
<b>FYTD RE Rate:</b>	80.00%	60.00%	100.00%	100.00%	75.00%	78.79%
<b>FY25 Manning:</b>	85%	90%	80%	99%	61%	<b>86%</b>

**EPA by Paygrade vs Inventory**



	E1-3	E4	E5	E6	E7	E8	E9	TOTAL
<b>% INV to FY24 EPA</b>	84%	56%	98%	99%	107%	80%	0%	87%
<b>EPA (FY24)</b>	43	101	129	92	44	15	0	424
<b>INVENTORY</b>	36	57	126	91	47	12	0	369
<b>EPA (FY25)</b>	44	103	128	92	46	16	0	429
<b>% INV to FY25 EPA</b>	82%	55%	98%	99%	102%	75%	0%	86%

### NOTES

**\*\*\*UNDERMANNED RATING\*\*\***

**Current manning is 87% of FY24 Enlisted Programmed Authorizations.**

**Convert IN opportunity: Contact ECM for possible conversion.**

**\*\*\*INSTANT APPROVAL FOR ALL SELRES APPLYING FOR E-5 AND BELOW!!!!\*\*\***

**Convert OUT opportunity: NONE**

**For any questions regarding community health, contact your ECM at [robert.e.derbyshire.mil@us.navy.mil](mailto:robert.e.derbyshire.mil@us.navy.mil).**